

Alaska Department of Fish and Game

Habitat Section
Southeast Region



114-23-10700-2005 Tributary 1

ADDITION

Water body name:

Survey date: 6/29/2024

Quad: Juneau A-6

Species & Lifestage:

Upper Reach Latitude: 58.145622 **Longitude:** -135.895137

Survey crew: CD, DK

Lower Reach Latitude: 58.145221 **Longitude:** -135.898379

Findings: We surveyed this uncataloged stream using a backpack electrofisher and GPS and captured juvenile coho salmon. This small stream seeps from the hillside with minimal flow and iron floc before paralleling the road shortly. There's a rusted-out culvert at waypoint 471, but it doesn't appear to blocking fish passage as coho salmon were caught upstream. Downstream the channel becomes well-defined channel and provides good fish rearing habitat. (Table 1; Figures 1–3).

Recommendations: Add this stream into the anadromous waters catalog for rearing coho salmon. (Figure 4).

Nomination: Pending

Table 1.–114-23-10700-2005 Tributary 1 survey data.

| Waypoint | Latitude | Longitude | Notes | Stream Width ft | Stream Substrate | Habitat Features | Gradient % | Sample Effort | Sample Results |
|----------|-----------|-------------|---|-----------------|------------------------------------|------------------|------------|---------------|----------------|
| 471 | 58.145762 | -135.895678 | Fishing just above culvert on small channel. Bottom of pipe is fully rusted out. Large tree on road blocking truck passage, but not too much more to look at that direction. Culvert is backwatered | 6-8 | Fine Organic Small Gravel | | 0-1 | EF | |
| 472 | 58.145727 | -135.895078 | Channel turns into mud seep. | | | | | | |
| 473 | 58.145634 | -135.895191 | Channel parallels road and seeps from hillside here. Iron flock pool. YOY CO capture. | | Fine Organic | | 0-1 | EF | 2 CO |



Figure 1.—Juvenile coho salmon captured at waypoint 473.



Figure 2.—Channel at waypoint 471.



Figure 3.—Culvert just downstream of waypoint 471.

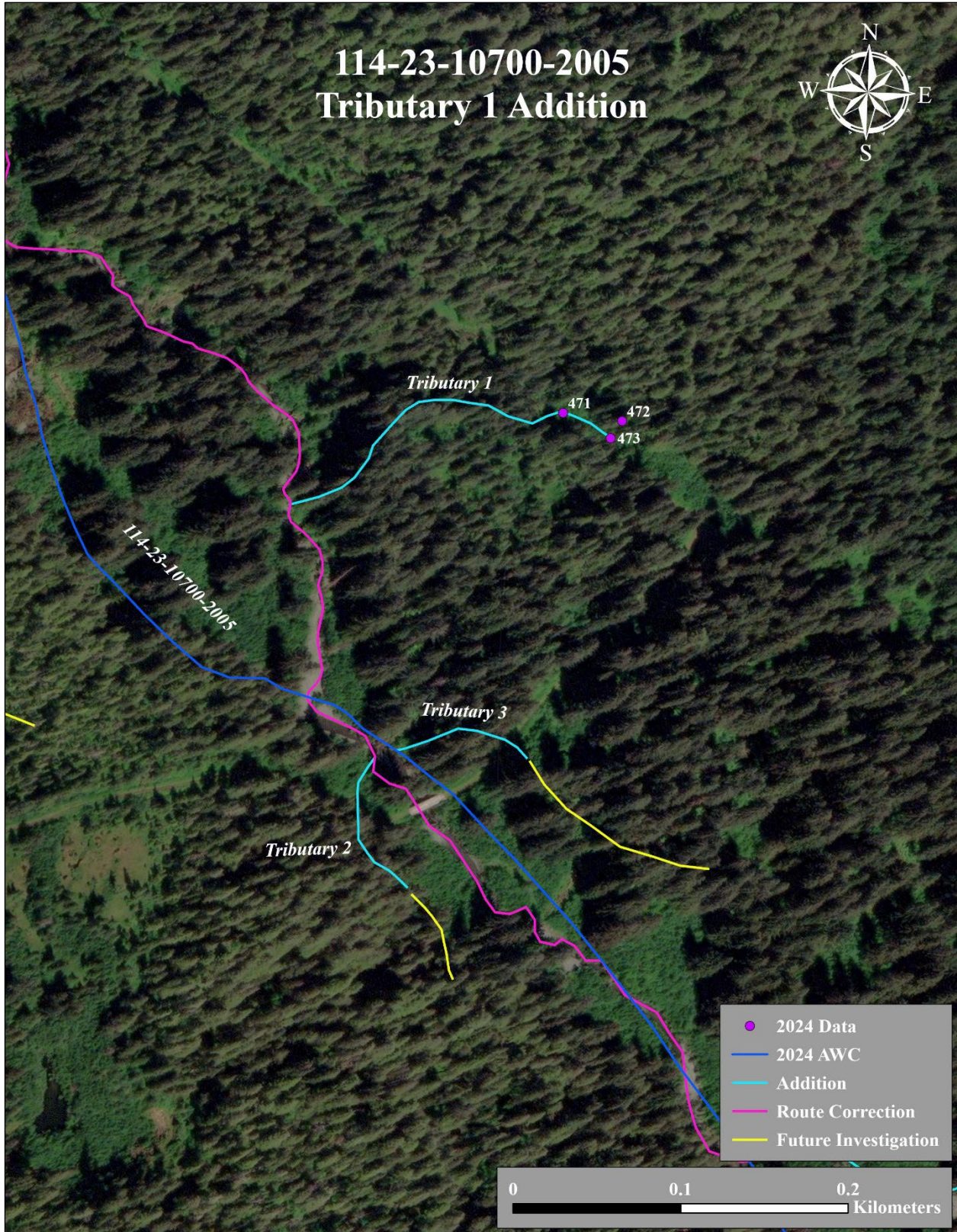


Figure 4.—Stream No. 114-23-10700-2005 Tributary 1 addition.